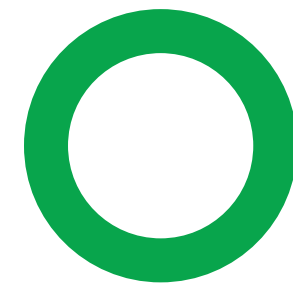


GREEN PHASE

HELPING TO BUILD A SUSTAINABLE FUTURE

→ BUSINESS PROFILE



INTRODUCTION TO GREEN PHASE

We are EV Charging Station and Infra developers. The EV Revolution brings with it opportunities to build a sustainable future. We aim to be a key influencer in leading this shift and pave a way for a greener future one vehicle, one neighborhood, and one city at a time.

02



SERVICES

EV Charging Station Infra Development For CPO.

- EV Charging Station Infra Development (Civil, Electrical,Fabrication,All Releted)
- Charger Installation and Commissioning
- Canopy and Branding
- EV Charging Stations Fleet Development

03



WORK DELIVERED

We are Successfully Deliver to
Our Client:
Installation And Commissionin:

- 40+ Charging Stations
- 45+ DC Charger
- 90+ AC Charger

04

CHARGING STATION

40+



DC CHARGER

I&C -45+

AC CHARGER

I&C -90+



SOLUTIONS

Contract Work For :

- CPO & OEM
- Charging Fleets and Hub
- Public Charging Station
- Home Charging Station
- Government Space



PRESENCE

- DELHI
- HARYANA
- PUNJAB
- HIMACHAL
- UTTRAKHAND
- UTTARPRADESH
- BIHAR
- JHARKHAND
- KOLKATA
- RAJISTHAN
- HYDERABAD
- BANGALORE

50+

Engineers & Technicians
Available at PAN INDIA



PROFILE:

Catogery: **Renewal Engery**
Service: **EV Charging Infra**
Founded Year: **2022**
Employee Count: **21**
Revenue: **5.0Cr+**
Office Location: **Delhi**





GREEN PHASE ENTERPRISES

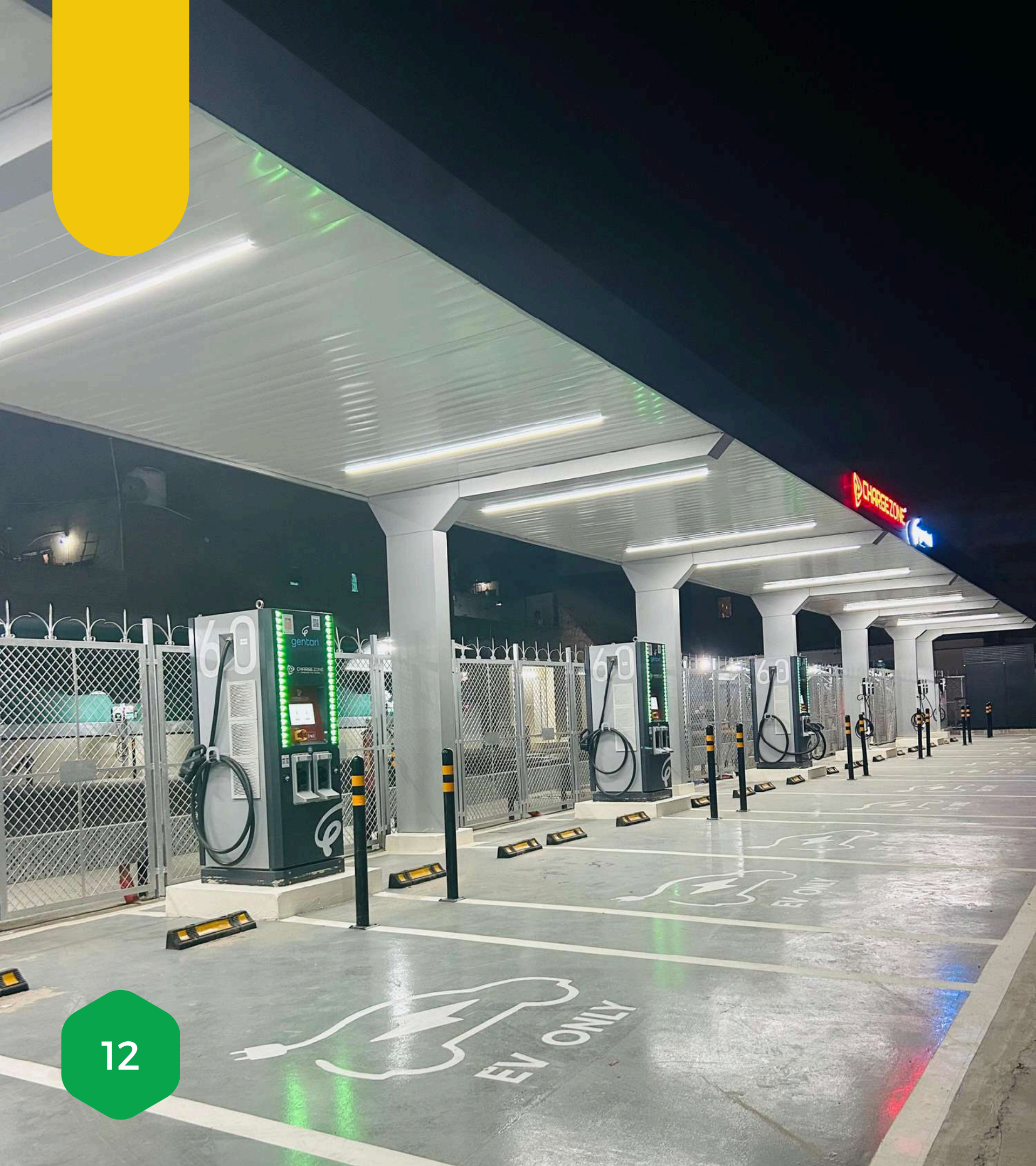
GSTIN: 07DQRPR4374A1ZI

Web: greenphase.in

Contact: +91-7827488393

Email: greenphase0@gmail.com

**Address: Kalindi Kunj, South Delhi ,
New Delhi-110025**



GREEN PHASE

(EV CHARGING STATION INFRA DEVELOPER)

Kalandi kunj, Distt. South Delhi-110025, Delhi(India)

www.greenphase.in

THANK YOU

ELECTRICAL SERVICES:

ELECTRICAL SUPPLY & SERVICE :

- **EV CHARGING STATION EPC**
- **HT/LT TRANSFORMER SETUP**
- **SUPPLY OF CABLES, GLANDS, SWITCH GEAR, TRANSFORMER, PANELS & ALL ELECTRICAL MATERIALS.**

CANOPY & INFRA :

CANOPY ,FABRICATION & CIVIL WORK:

- **Profile Sheet Shed**
- **Fabric Tensile Shed**
- **Canopy With Fall Ceiling & ACP Cladding**
- **Branding & Beautification**
- **Cabin, Flooring ,Foundation ,Boundary,Painting .**

HOME CHARGER INSTALLATION

- **SITE SURVEY**
- **INSTALLATION & COMMISSIONING**
- **SUPPLY & SERVICE OF CABLES**
,MCB,ACCESSORIES

PUBLIC & FLEET CHARGING STATION

- **SITE SURVEY , BOQ ,& DESIGNING**
- **INSTALLATION & COMMISSIONING**
- **SUPPLY & SERVICE OF CABLES ,PANELS,EARTHING ,SWITCH GEAR,GLANDS,TRAY,DWC PIPE,ALL ELECTRICAL ACESSSORIES .**
- **CIVIL WORK (EXCAVATION,TRENCH ,PLINTH , FOUNDATION,FLOORING,PAINTING)**
- **CANOPY ,FABRICATION,SHED,BRANDING,LOGO,BEAUTFICATION.**

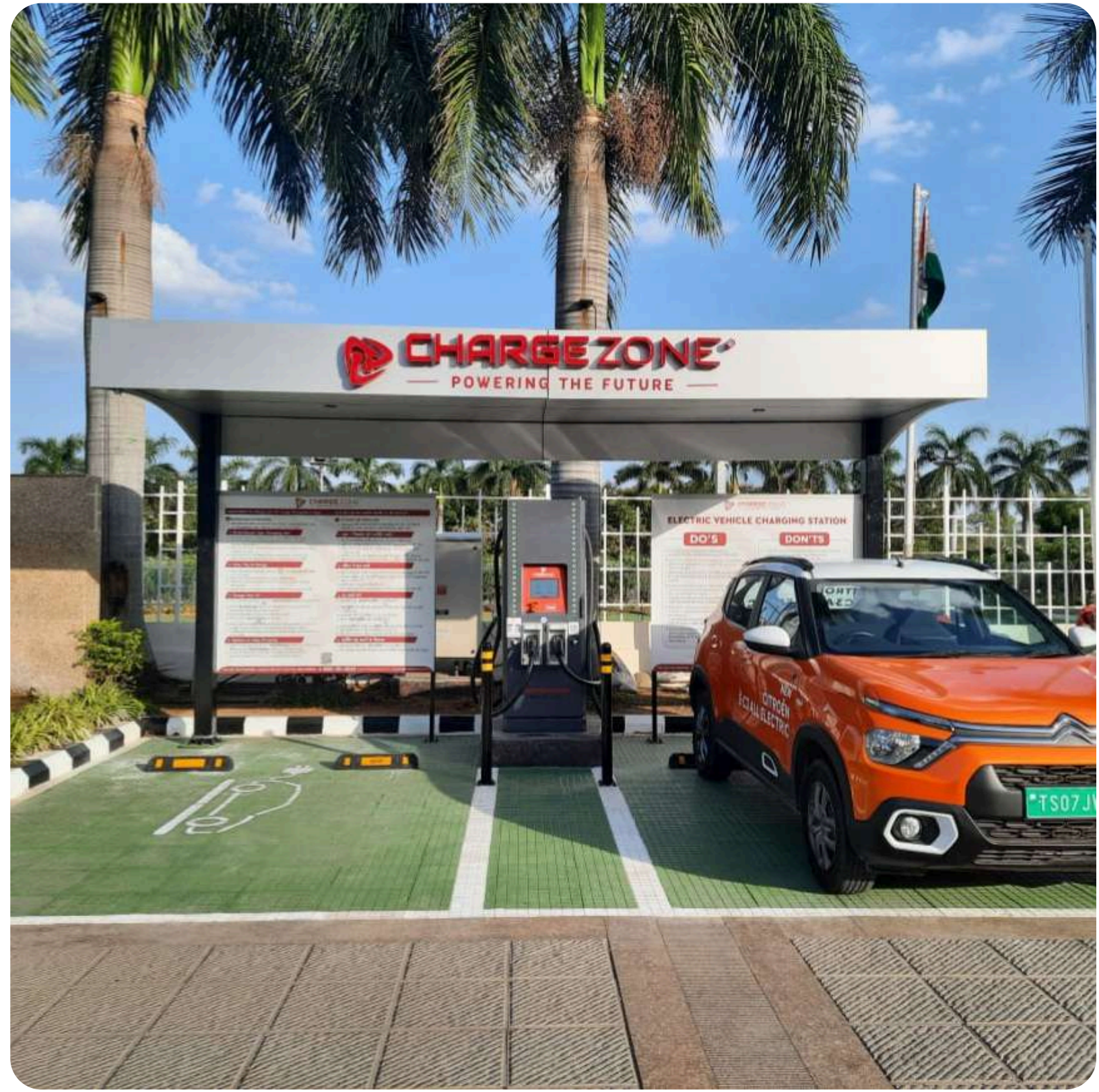
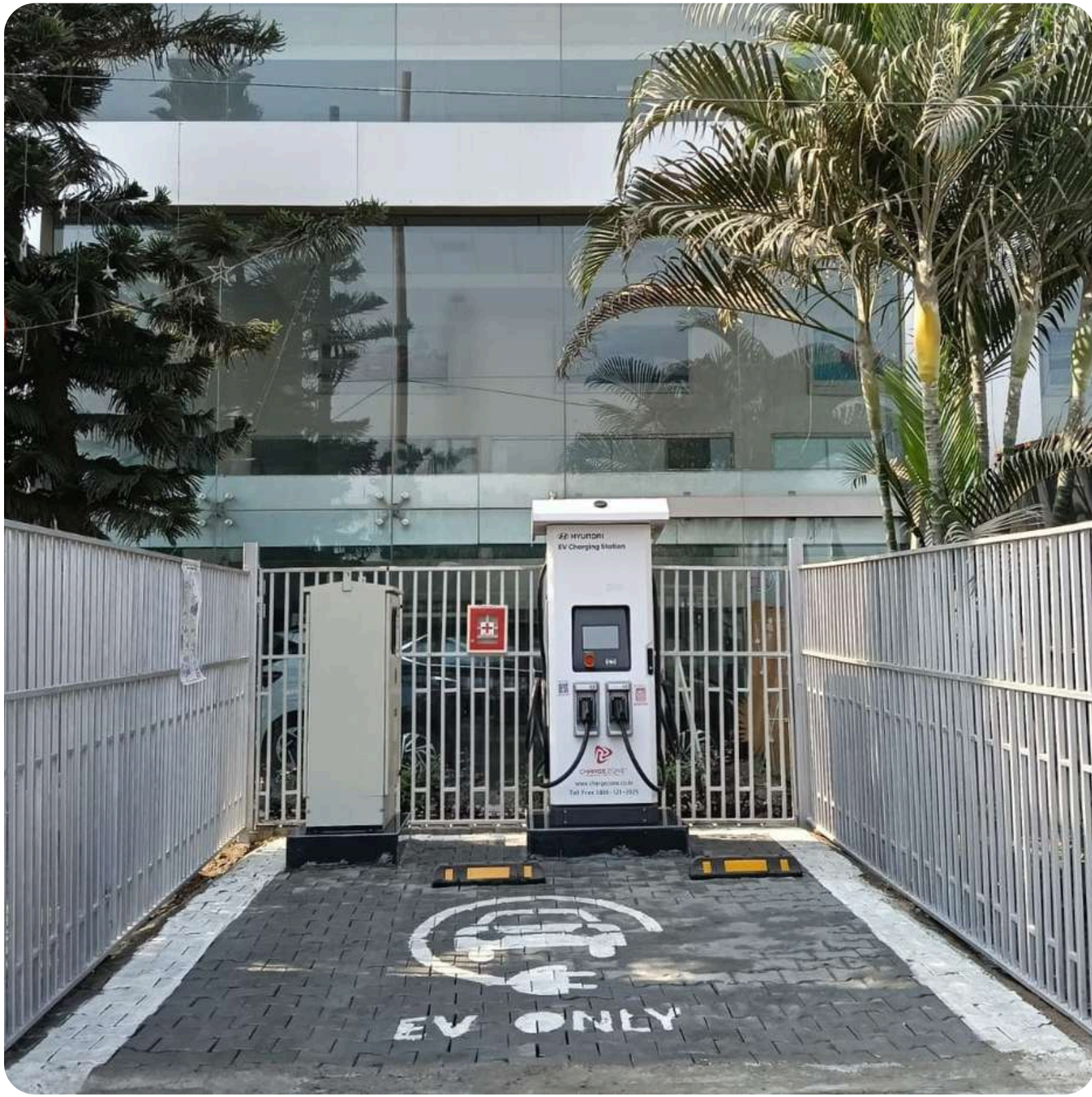
CLIENTS:

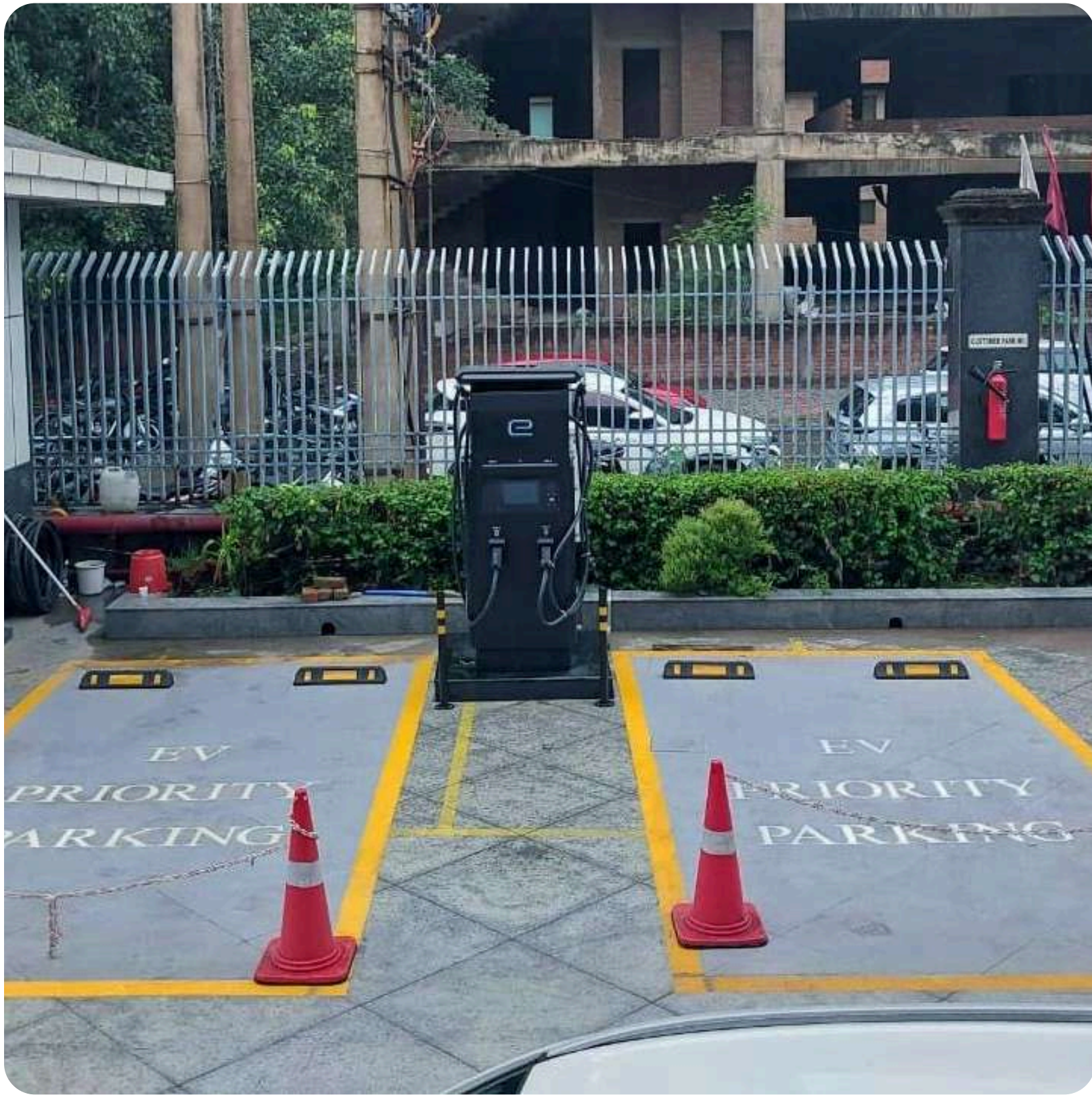
- **CHARGEZONE**
- **THUNDER PLUS**
- **EXICOM**
- **STATIQ**
- **ADANI Total Energies**

PROJECT DELIVER:













CHARGE ZONE

— POWERING THE FUTURE —

CHARGE ZONE
BY POWERING THE FUTURE

ELECTRIC VEHICLE CHARGING STATION

DO'S

- 1. Use the correct charging cable for your vehicle.
- 2. Connect the charging cable to the charging station and the vehicle.
- 3. Wait for the charging station to start charging.
- 4. Do not touch the charging cable or the vehicle while charging.
- 5. Do not use the charging station for anything other than charging.
- 6. Do not use the charging station if it is damaged or if it is not working.
- 7. Do not use the charging station if it is not safe to use.
- 8. Do not use the charging station if it is not secure.
- 9. Do not use the charging station if it is not clean.
- 10. Do not use the charging station if it is not dry.

DON'TS

- 1. Do not use the charging station if it is not safe to use.
- 2. Do not use the charging station if it is not secure.
- 3. Do not use the charging station if it is not clean.
- 4. Do not use the charging station if it is not dry.
- 5. Do not use the charging station if it is not working.
- 6. Do not use the charging station if it is damaged.
- 7. Do not use the charging station for anything other than charging.
- 8. Do not touch the charging cable or the vehicle while charging.
- 9. Do not wait for the charging station to start charging.
- 10. Do not connect the charging cable to the charging station and the vehicle.

— POWERING THE FUTURE —
1-800-521-2020



CHARGE ZONE
BY POWERING THE FUTURE

ELECTRIC VEHICLE CHARGING STATION

DO'S

- 1. Use the correct charging cable for your vehicle.
- 2. Connect the charging cable to the charging station and the vehicle.
- 3. Wait for the charging station to start charging.
- 4. Do not touch the charging cable or the vehicle while charging.
- 5. Do not use the charging station for anything other than charging.
- 6. Do not use the charging station if it is damaged or if it is not working.
- 7. Do not use the charging station if it is not safe to use.
- 8. Do not use the charging station if it is not secure.
- 9. Do not use the charging station if it is not clean.
- 10. Do not use the charging station if it is not dry.

DON'TS

- 1. Do not use the charging station if it is not safe to use.
- 2. Do not use the charging station if it is not secure.
- 3. Do not use the charging station if it is not clean.
- 4. Do not use the charging station if it is not dry.
- 5. Do not use the charging station if it is not working.
- 6. Do not use the charging station if it is damaged.
- 7. Do not use the charging station for anything other than charging.
- 8. Do not touch the charging cable or the vehicle while charging.
- 9. Do not wait for the charging station to start charging.
- 10. Do not connect the charging cable to the charging station and the vehicle.

— POWERING THE FUTURE —
1-800-521-2020







 **CHARGE ZONE**

 **gentari**



 **CHARGE ZONE**
POWERING THE FUTURE

 **gentari**




EV ONLY


EV ONLY


EV ONLY





























चार्ज ज़ोन

CHARGEZONE



WE ARE PROVIDING SERVICE FOR EV CHARGING STATION:

EPC TURNKEY PROJECTS

EV CHARGER I & C

ELECTRICAL & CIVIL WORK

CANOPY

PAN INDIA

A large, thick, green stylized letter 'E' that serves as a background for the text. It has a curved top and bottom, and a straight vertical stem on the right side.

CONTINUE HELPING TO BUILD A SUSTAINABLE FUTURE.